

**BPW-Hungária Kft.**  
9700 Szombathely, Hungary  
+36 94 517 200  
info@bpwagrar.com



For more  
information  
visit our website



Follow us on  
Facebook to stay  
in the loop



# MECHANICAL SUSPENSION PRODUCT RANGE

## Strength. Stability. Efficiency.

Core Product Line



The brands of the BPW Group



BPW Agrar

Perfect is just enough.

# MECHANICAL SUSPENSION PRODUCT RANGE

Strength. Stability. Efficiency.

BPW Agrar's new mechanical suspension family has been engineered to combine superior durability, long service life, and cost-efficient production. Leveraging advanced design principles and a modular product architecture, this range is built to meet real operational needs while offering maximum flexibility for diverse applications worldwide.

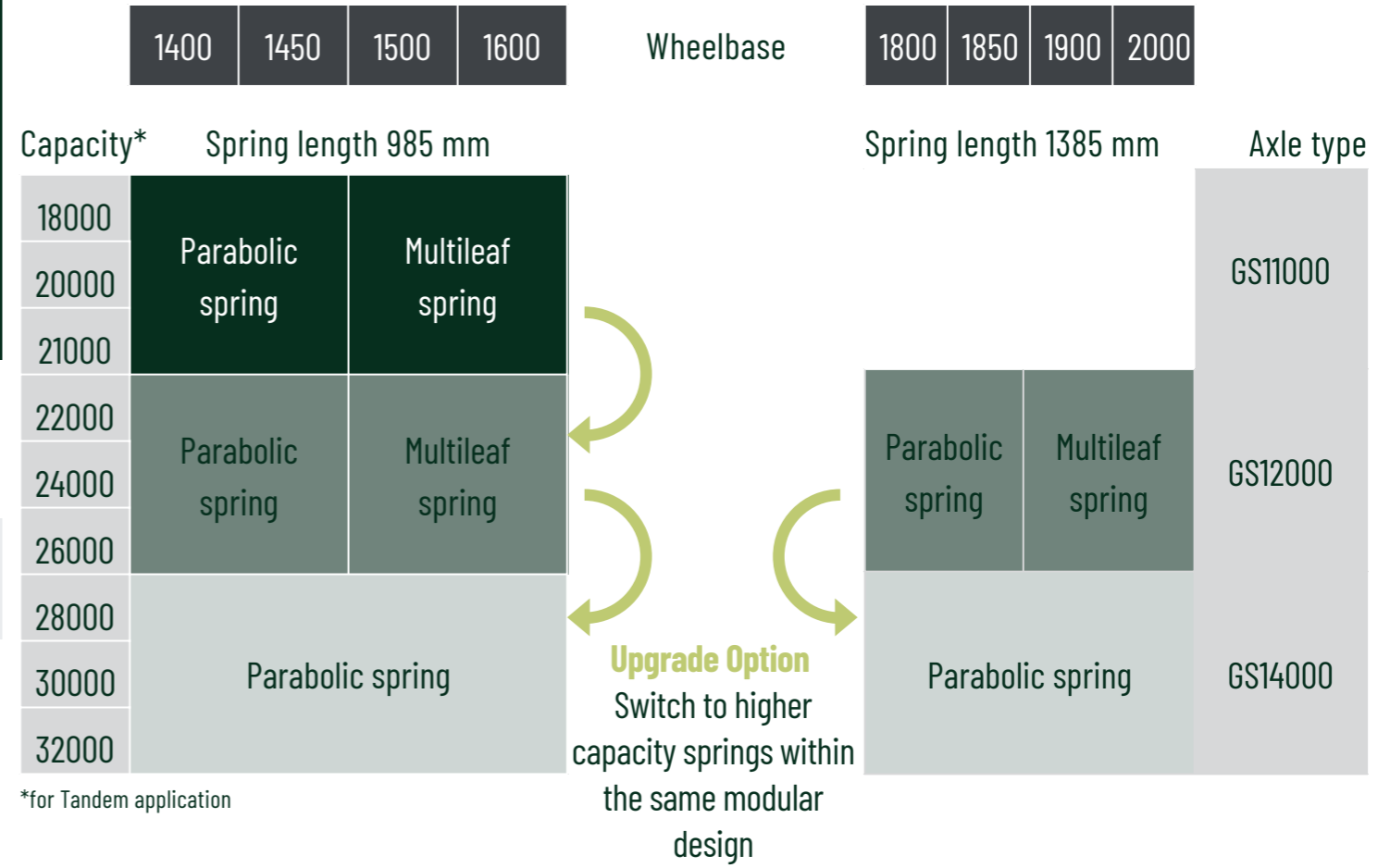
## MODULAR PRINCIPLE DESIGN - INTERCHANGEABLE SPRING TYPES VIA UNIFORM DIMENSIONS

### IMPLEMENTATION PHASES & TIME SCHEDULE

#### TYP A - 2026 Q2 (SOP)



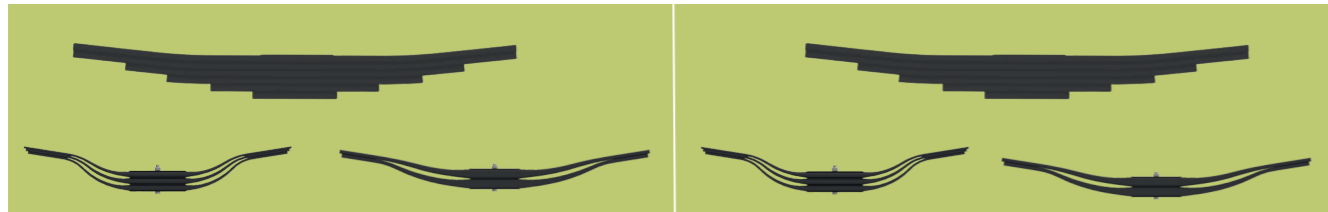
#### TYP B - 2027 Q4 (SOP)



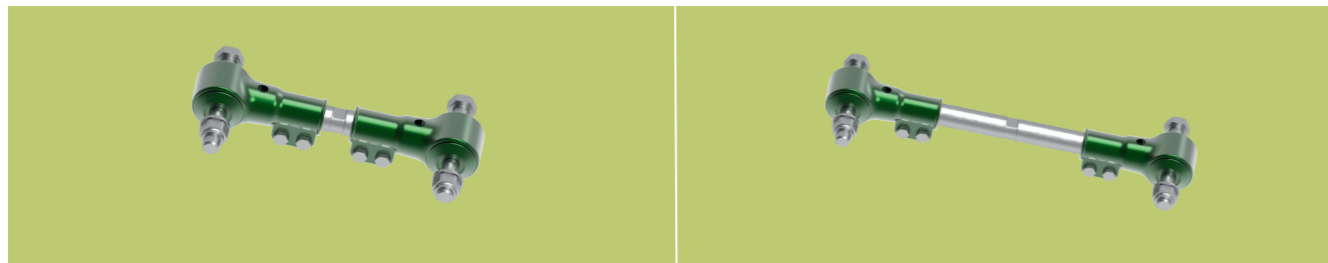
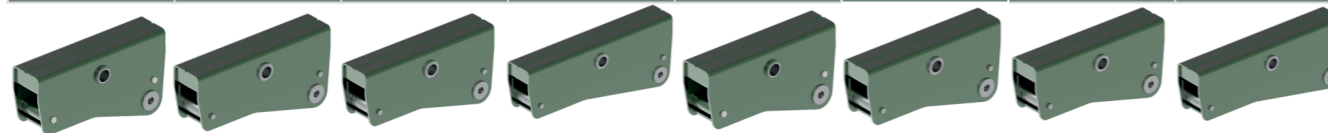
## MODULAR PRODUCT SYSTEM - TYPE A

Short version - spring length 985 mm

Long version - spring length 1385 mm



RS 1400	RS 1450	RS 1500	RS 1600	RS 1800	RS 1850	RS 1900	RS 2000
---------	---------	---------	---------	---------	---------	---------	---------



## TYPE A



For

High-demand applications with axle loads from 11 t axle load

### Advantage

Maximum stability without stabilisers, connection rod for precise axle alignment, maintenance-free equalising beam bearings

### Offering

Fully customisable configurations, compatible with multiple wheelbases and spring types within the modular platform

### Typical Application

- ✓ Primarily aligned with **Custom Product Line** solutions
- ✓ Also suitable for **Core** Product Line configurations with **GS11000** axles

## KEY FEATURES & TECHNICAL ADVANTAGES - TYPE A

### Modular Principle Design

Identical installation dimensions allow interchangeability between parabolic and leaf springs

### Enhanced Spring Options

100 mm widths, parabolic or multi-leaf

### No Side Support Required

Even at larger wheelbases, reducing cost and complexity

### Advanced Connection Rod System

Adjustable at the rod or support for precise axle positioning

### Maintenance-Free Bearings

Ensures long-lasting performance with minimal downtime



## INSTALLATION DIMENSIONS - TYPE A

### Wheelbase & Spring length

1400 / 1450 / 1500 / 1600	spring length 985 mm
1800 / 1850 / 1900 / 2000	spring length 1385 mm

### Ride height

	Parabolic spring (mm)	Multileaf spring (mm)
Standard	410	410

### Axle

Type	Axle beam	Brake
GS(LA) 11010	120x10	N 4012-4
	120x15	FL 4112
GS(LL) 12010	150x10	FL 4118
	150x16	FL 4518
GS(LL) 14010	150x20	FL 4118
	150x24	FL 4518

### Spring type fully interchangeable

